

BL0202

2" x 2" Surface Mount LED Back Light



- Aii** Extremely consistent light over the entire active area of illumination.
- Aii** Integral M6 nut channel for easy mounting.

Ordering Information

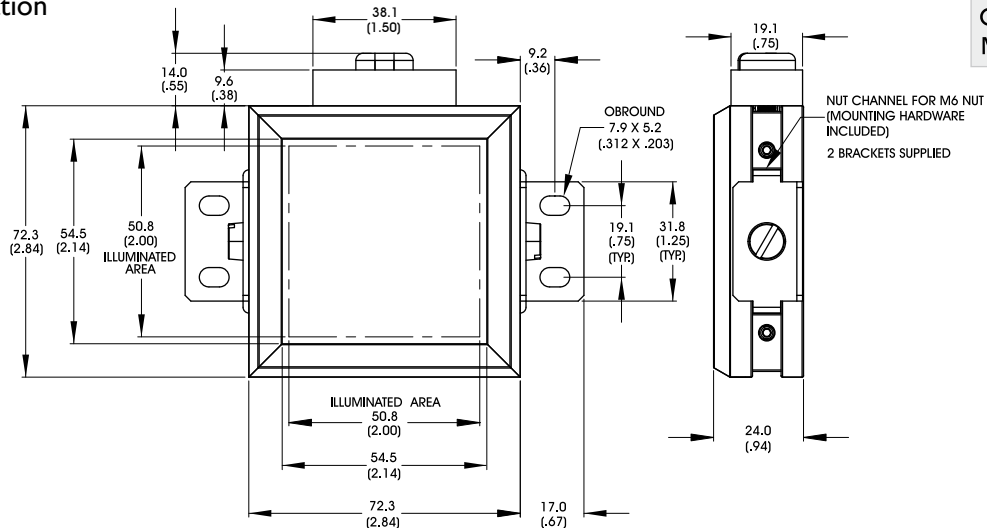
Standard Product:
Shipped Next Day
BL0202-660
Configured for use with Ai power supply

BL0202-66024
Configured for use with user supplied 24vDC Power Supply

Standard Product Variation: Shipped Within Two Weeks	Spectral wavelength	Alternative Connector
BL0202 -	XXX	XX
	(blue) 470 †	IC
	(green) 520 †	IS
	(red) 660	C2
	(infra-red) 880	C3
	(white) WHI †	C5
		12
		24

IC = iCS (requires 24v power supply)
IS = ISU (requires 24v power supply)
C2 = Ai Connector
C3 = Pulsar 710 Connector
C5 = Pulsar 320 Connector
* Available with IC and 24v options only
† Not available with IC or 12v

Dimensional Information



[Click for Installation Models & Drawings](#)

DIMENSIONS ARE IN MILLIMETERS (INCHES)

Standard Variation Current Specifications						Standard Product Information	
	blue	green	red	infra-red	white		
@12	N/A	N/A	240	240	N/A	mA	Product Lifetime: 50,000 hours
@24	80	80	120	120	80	mA	Operating Temperature: 0-60° C