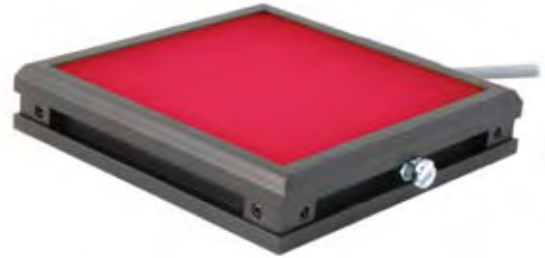


BL0404

4" x 4" Surface Mount LED Back Light

- Aii** Extremely consistent light over the entire active area of illumination.
- Aii** Integrated M6 nut channel for easy mounting.



Ordering Information

Standard Product:
Shipped Next Day

BL0404-660

Configured for use with
Ai power supply

BL0404-66024

Configured for use with user
supplied 24v DC Power Supply

Standard Product Variation:
Shipped Within Two Weeks

| BL0404 | Spectral wavelength | | Optional Light Conditioning | |
|-------------|---------------------|----|-----------------------------|------|
| | XXX | XX | X | XXX |
| (blue) | 470 † | IC | P | M12* |
| (green) | 520 † | IS | | |
| (red) | 660 ⊖ | C2 | | |
| (infra-red) | 880 ⊖ | C3 | | |
| (white) | WHI † | C5 | | |
| | | 12 | | |
| | | 24 | | |

IC = iCS (requires 24v power supply)

IS = iSU (requires 24v power supply)

C2 = Ai Connector

C3 = Pulsar 710 Connector

C5 = Pulsar 320 Connector

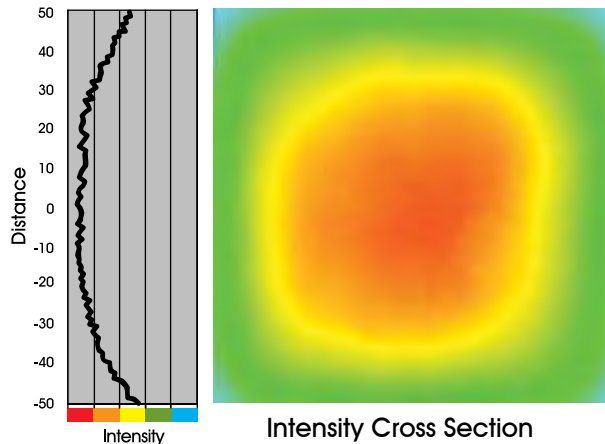
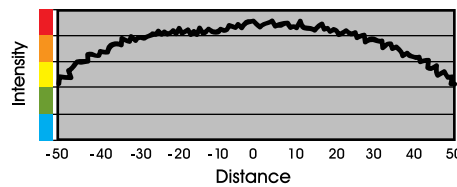
* Available with IC and 24v options only

† Not available in 12v

⊖ IS option not available

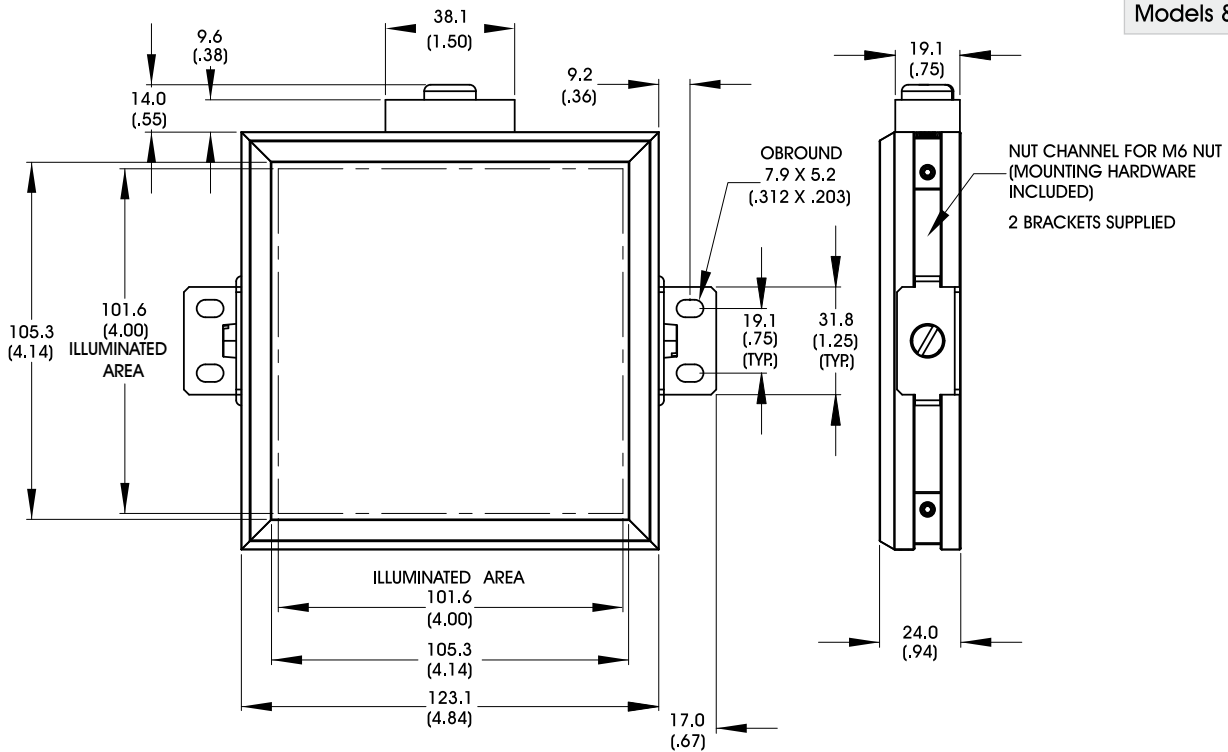
Light Consistency Information

Intensity Distribution



Dimensional Information

[Click for Installation Models & Drawings](#)



Standard Variation Current Specifications

| | blue | green | red | infra-red | white | |
|-----|------|-------|-----|-----------|-------|----|
| @12 | N/A | N/A | 960 | 960 | N/A | mA |
| @24 | 320 | 320 | 480 | 480 | 320 | mA |
| Ai | 320 | 320 | 480 | 480 | 320 | mA |

General Specifications

| | |
|------------------------|----------------|
| Weight: | 454 g (1lb) |
| Finish: | Black Anodized |
| Operating Temperature: | 0-60°C |
| Meets Specifications: | CE, RoHS |

Standard Product Information

| Red | Max. Illumination | Irradiance (mW/cm ²) |
|-----|-------------------|----------------------------------|
| | @ Surface | 1.5 |
| | Lifetime | 50,000 hrs |

| White | Max. Illumination | Irradiance (mW/cm ²) |
|-------|-------------------|----------------------------------|
| | @ Surface | 5.0 |
| | Lifetime | 50,000 hrs |

Additional Information

CAUTION: This light requires mounting in such a way as to facilitate proper heat sinking, which will help ensure long life and stable operation. *Due to the potential of high surface temperatures, care must be exercised when installing or adjusting the product while energized.*

Various methods for effective heat transfer can be used, including:

Ensuring that the entire backside of the light is in contact with a heat sinking thermal mass

Using external fans placed in the proximity of the light to ensure air flow over the backside of the light

Operating light at reduced input voltage when applicable

For additional information on thermal mounting techniques, contact Ai.