

# CB0404

## 4" x 4" Collimated Surface Mount LED Back Light

- Aii** Greatly improves edge detection for curved surfaces
- Aii** Integrated M6 nut channel for mounting (hardware included)



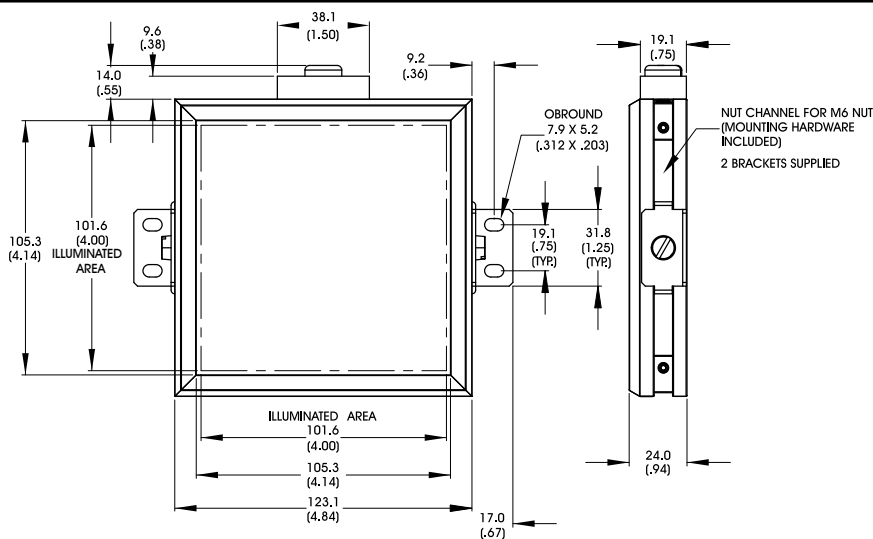
### Ordering Information

Standard Product:  
Shipped Next Day  
**CB0404-WHIIC**  
Configured with inline  
Current Source

Standard Product Variation: Shipped Within Two Weeks	Spectral wavelength	Optional power Compatibility	Alternative Connector
CB0404 -	XXX	XX	XXX
(blue)	470 †	IC	M12*
(green)	520 †	IS	
(red)	660 ⊖	C2	
(infra-red)	880 ⊖	C3	
(white)	WHI †	C5	
		12	
		24	

IC = iCS (requires 24v power supply)  
IS = ISU (requires 24v power supply)  
C2 = Ai Connector  
C3 = Pulsar 710 Connector  
C5 = Pulsar 320 Connector  
\* Available with IC, IS, and 24v options only  
† Not available in 12v  
⊖ IS option not available

### Dimensional Information



[Click for Installation Models & Drawings](#)

Cable Length: 1.5 Meter (59")

DIMENSIONS ARE IN MILLIMETERS (INCHES)

### Standard Variation Current Specifications

	blue	green	red	infra-red	white	
@12	N/A	N/A	960	960	N/A	mA
@24/Ai	320	320	480	480	320	mA

### Standard Product Information

Product Lifetime: 50,000 hours  
Operating Temperature: 0-60° C