

DL51120

Diffuse Linear Dome Illuminator



- Aii** Oblong diffuse light for use with highly reflective materials.
- Aii** Convenient mounting with M6 nut channels.

Ordering Information

Standard Product:
Shipped Next Day

DL51120

P/N: DL51120-660
Configured for use with Ai
Power Supply

Standard Product Variation:
Shipped Within Two Weeks

	Spectral wavelength	Optional power Compatibility	Alternative Connector
DL51120 -	XXX	XX	XXX
	(UV) 395*	IC	M12*
	(blue) 470†	IS	
	(green) 520†	C2	
	(yellow) 590	C3	
	(red) 660⊖	C5	
	(infra-red) 880⊖	12	
	(white) WHI†	24	

IC = ICS (requires 24v power supply)
IS = ISU (requires 24v power supply)
C2 = Ai Connector
C3 = Pulsar 710 Connector
C5 = Pulsar 320 Connector
* Available with IC and 24v options only
† Not available in 12v
⊖ IS option not available

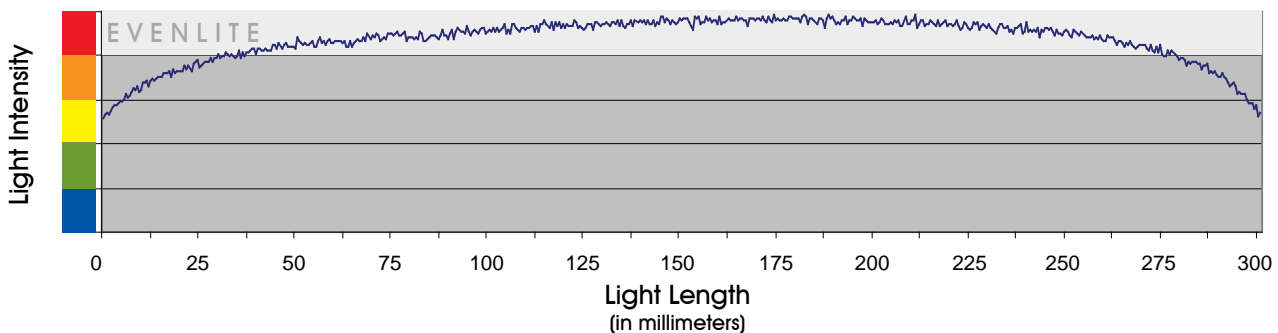
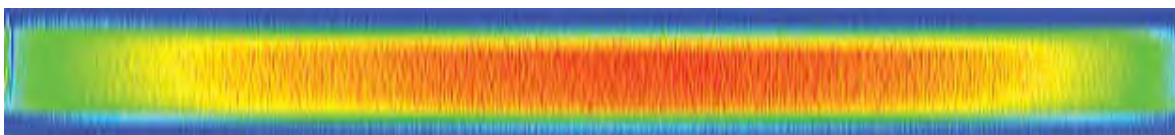
Optimal working distance:
12mm (.5")
Effective Working Range:
12-50mm (.5"-2")

For custom lengths, please contact Customer Service for a specific part number and delivery time.

◇ UV LEDs have a considerably shorter half-life than other LEDs (<1000hrs). For this reason Ai recommends these LEDs be used in strobe mode only. For applications requiring continuous 24v power, contact Ai for assistance.

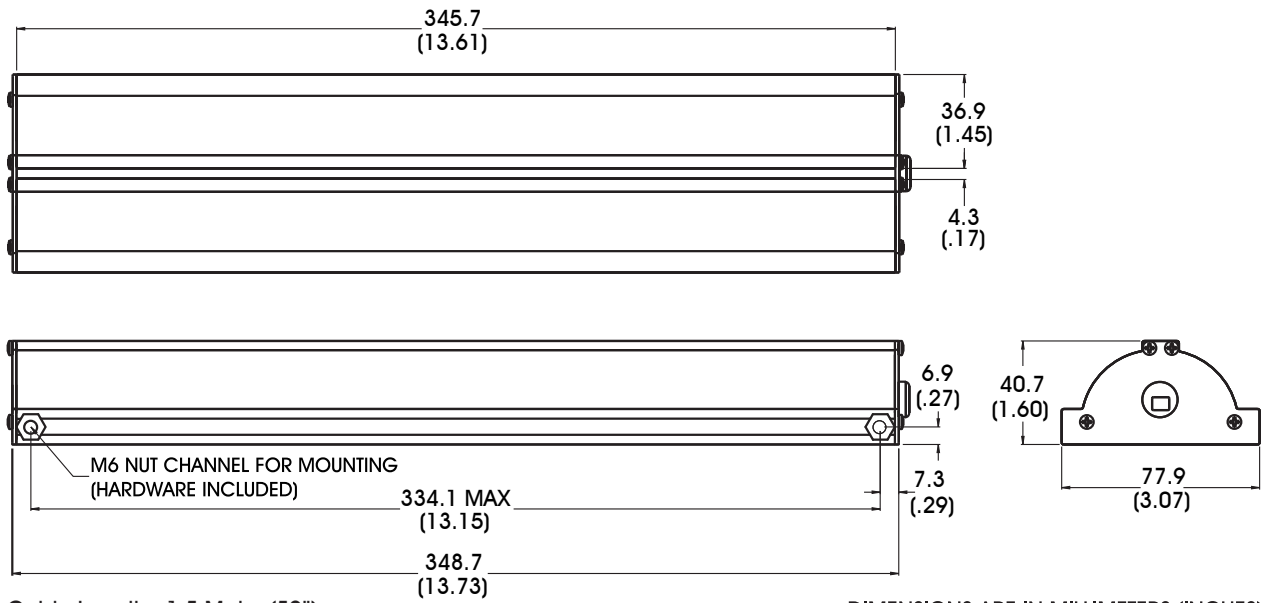
Light Uniformity Information

(Standard Product: DL51120-660)



Dimensional Information

[Click for Installation Models & Drawings](#)



Cable Length: 1.5 Meter (59")

DIMENSIONS ARE IN MILLIMETERS (INCHES)

Standard Variation Current Specifications

	blue	green	yellow	orange	red	infra-red	white	
@24	480	480	240	240	360	280	480	mA
Aj*	100	100	100	100	150	150	100	mA

*per channel, 1 channel

General Specifications

Weight:	624g (22oz)
Finish:	Black Anodized
Operating Temperature:	0-60° C
Meets Specifications:	CE, RoHS

Standard Product Information

Red	Max. Illumination	Steady State lux
	Working Distance A: .5"	1000
	Working Distance B: 2"	280
	Lifetime	50,000 hrs

Additional Information