

RL113

High Brightness LED Bright Field Ring Light

Aii High intensity from a long working distance

Aii IP65 compliant design



Ordering Information

Standard Product:
Shipped Next Day

RL113-WHIIC

Configured with in-line
current source

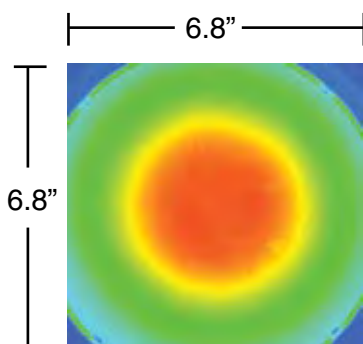
Standard Product Variation:
Shipped Within Two Weeks

	Spectral wavelength	Optional power compatibility	Alternative Connector
RL113 -	XXX	XX	XXX
(blue)	470	IC	M12*
(green)	530	IS	
(red)	625	C2	
(IR)	850	C3	
(white)	WHI	C5	
		24	

IC = ICS (requires 24v power supply)
IS = ISU (requires 24v power supply)
C2 = Ai Connector
C3 = Pulsar 710 Connector
C5 = Pulsar 320 Connector
* Available with IC and 24v options only

Optimal working distance:
300mm (12")
Effective Working Range:
225mm - 600mm (9" - 24")

Intensity Distribution



Working Distance: 300mm (12")

